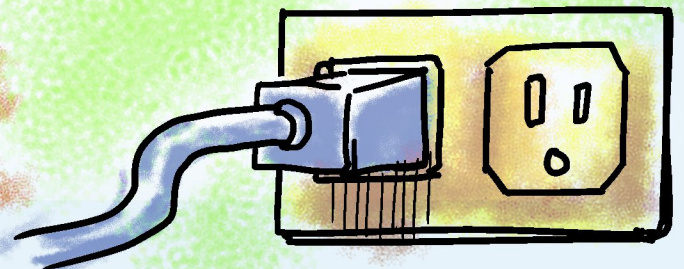
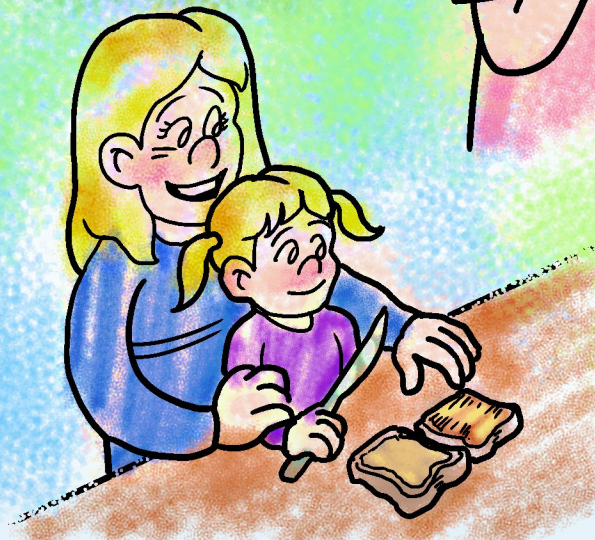
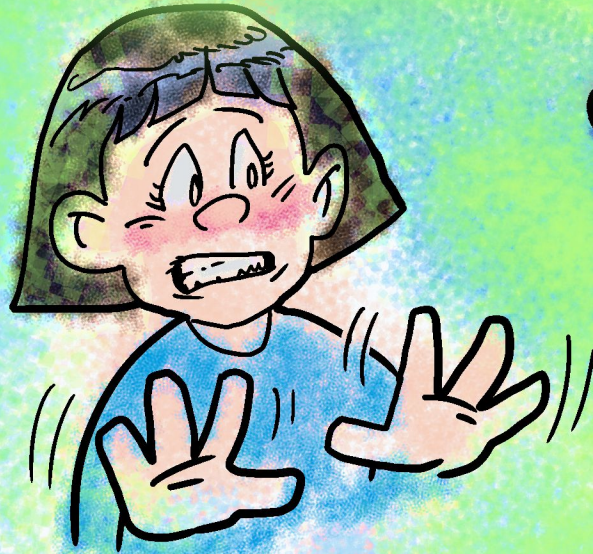
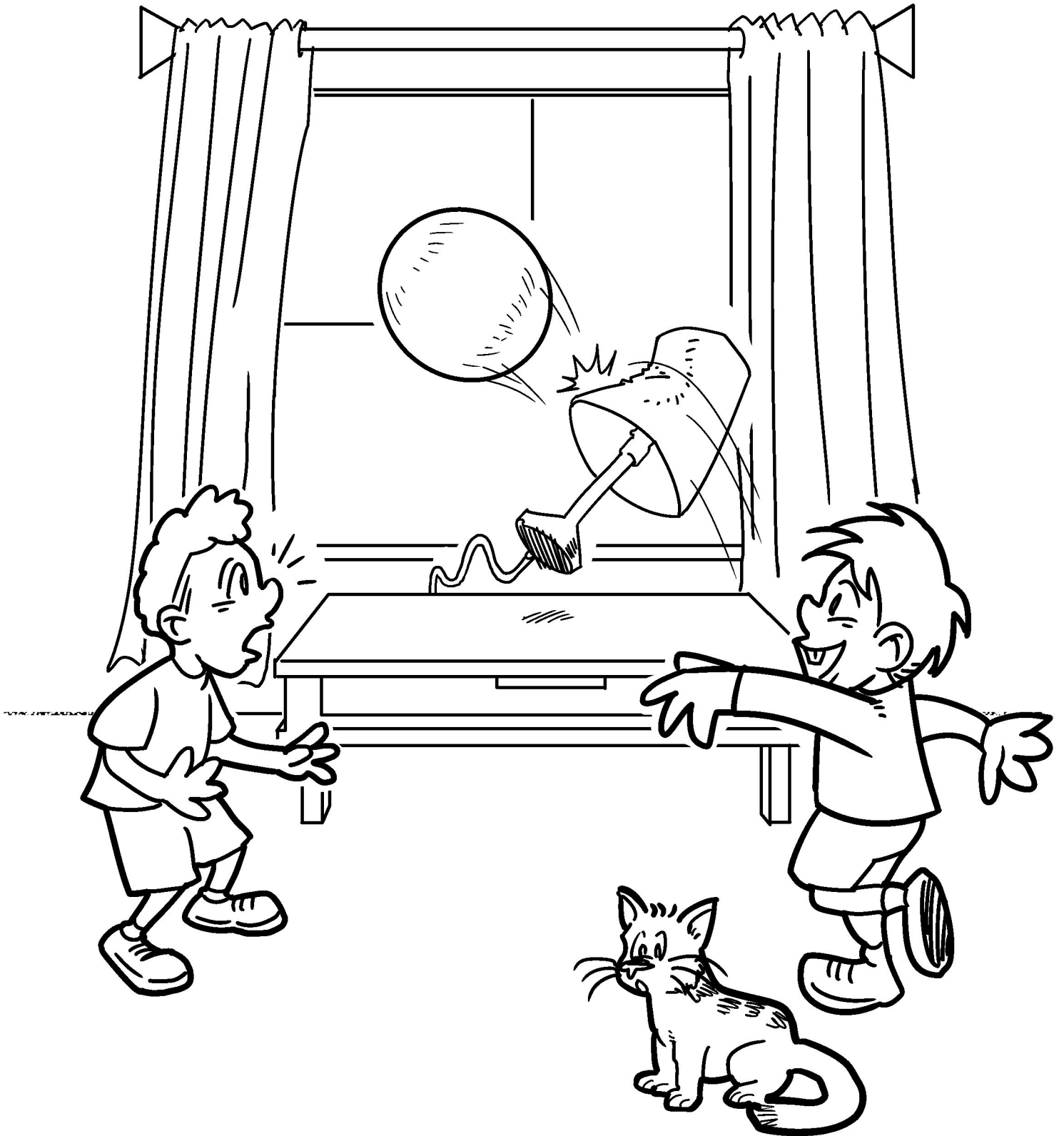
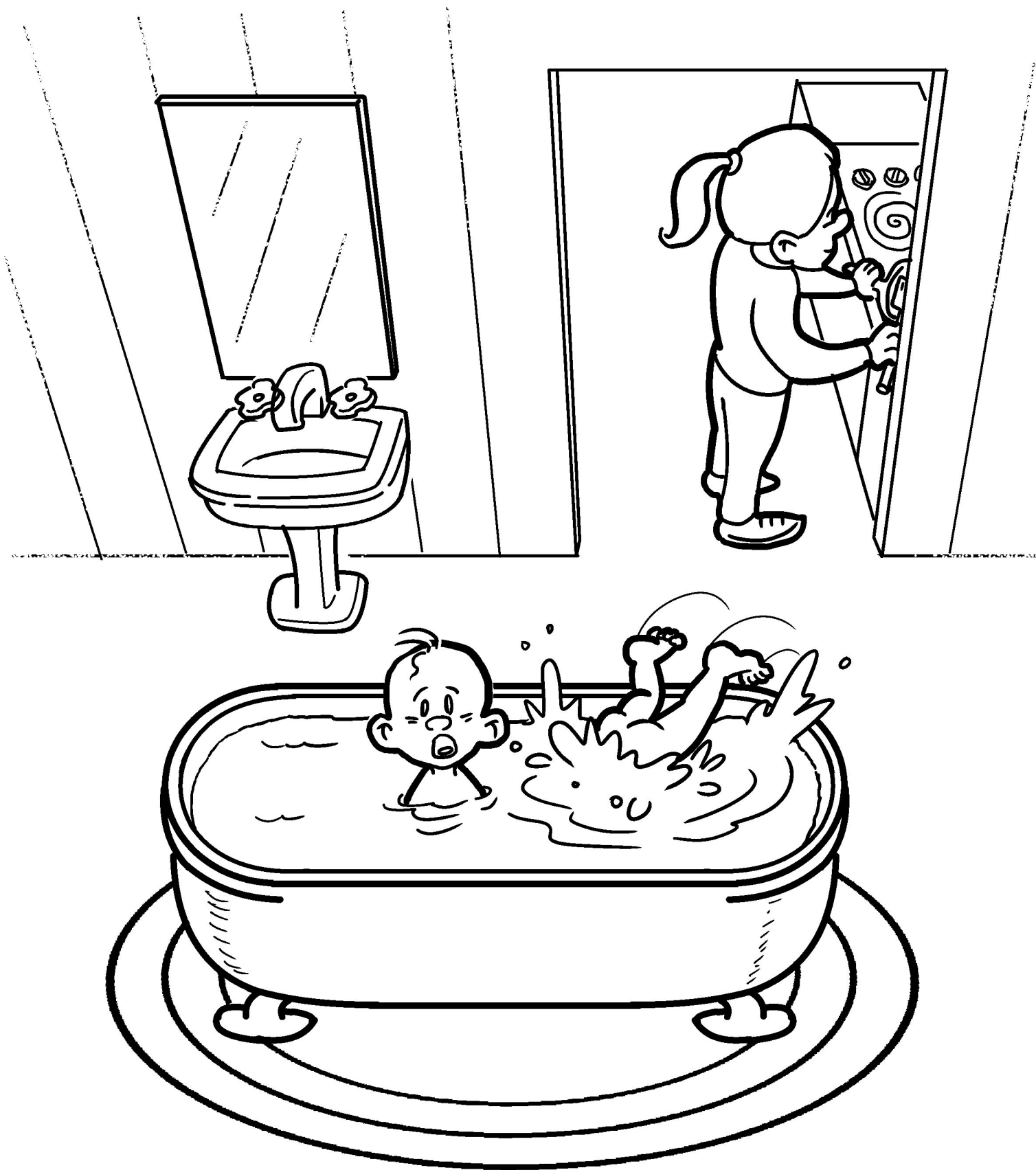


Play Safe Inside

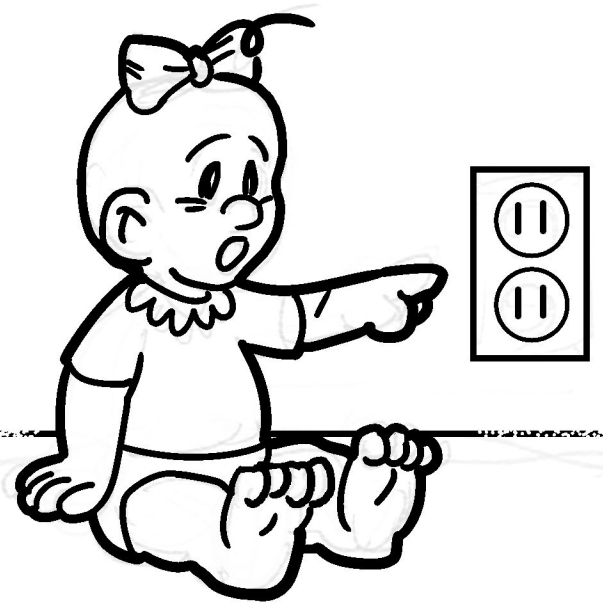
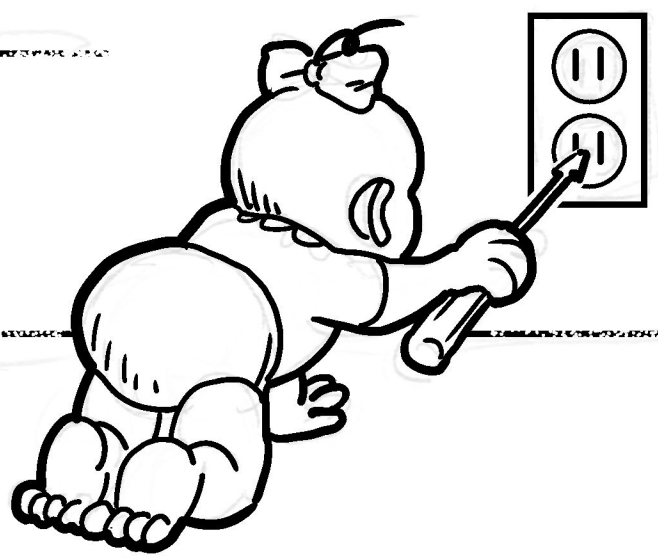
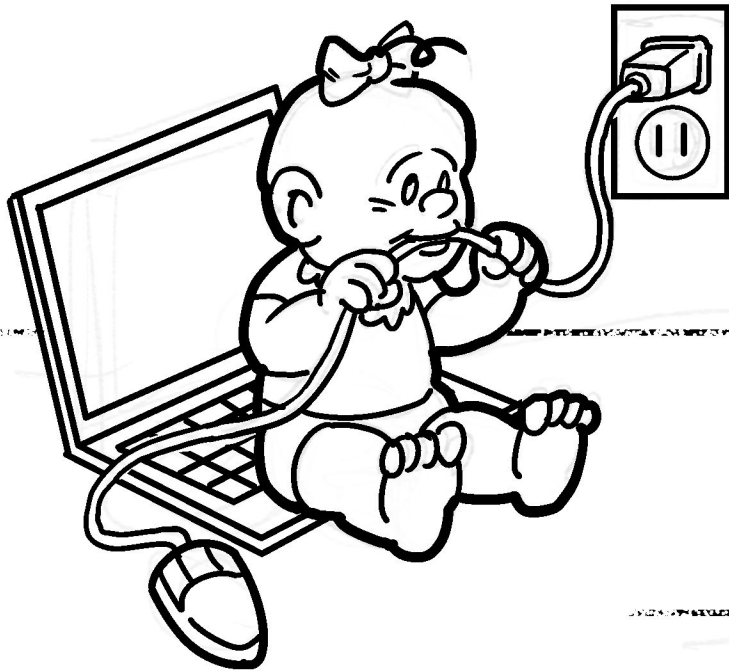




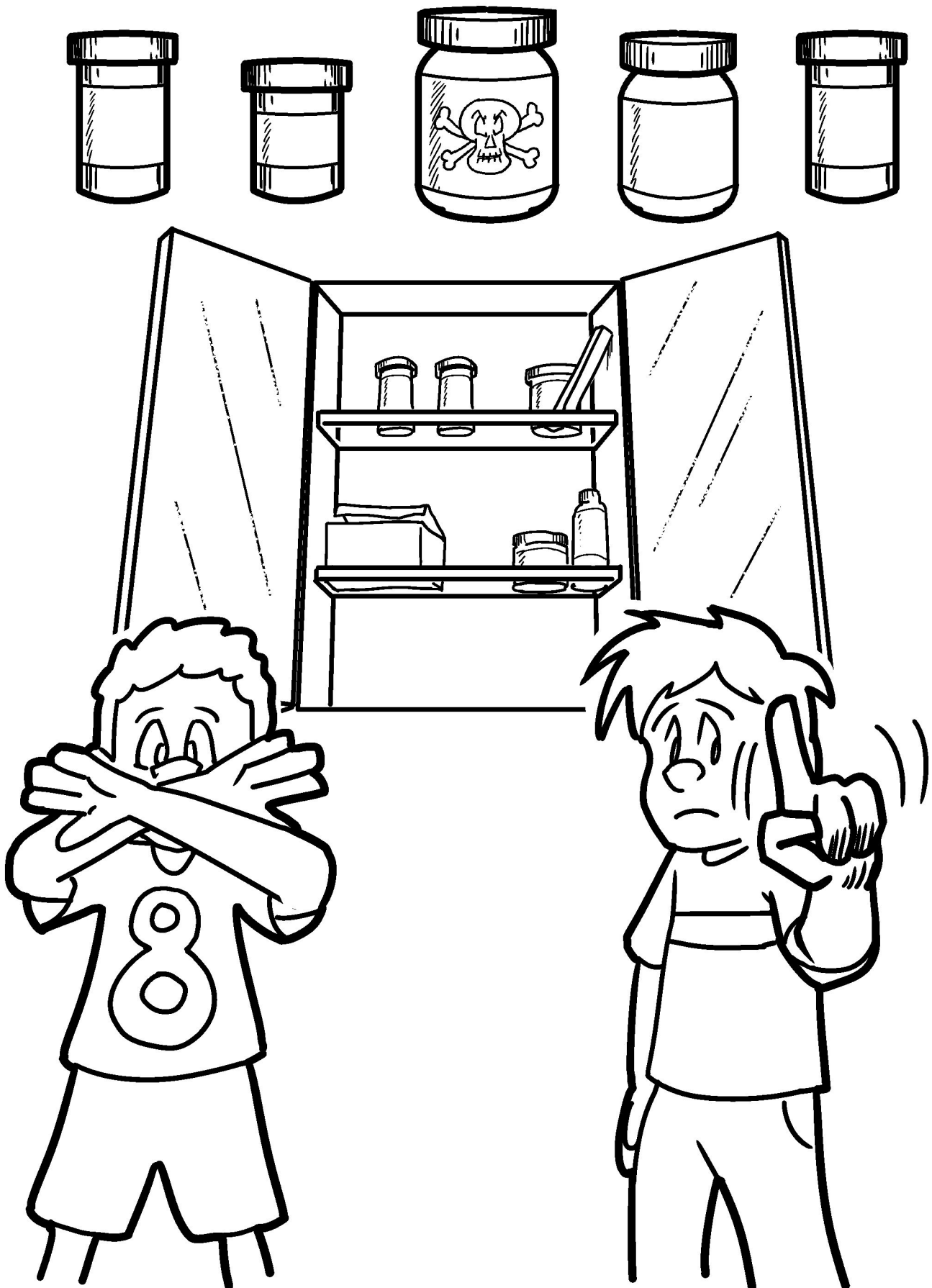
When we throw balls in the house, people can get hurt and things can get broken.



Small children should never be left alone in the bathtub. Be sure to help watch your younger brother or sister at all times.



**Never put anything into an electrical socket.
If you need something plugged in,
ask for help.**



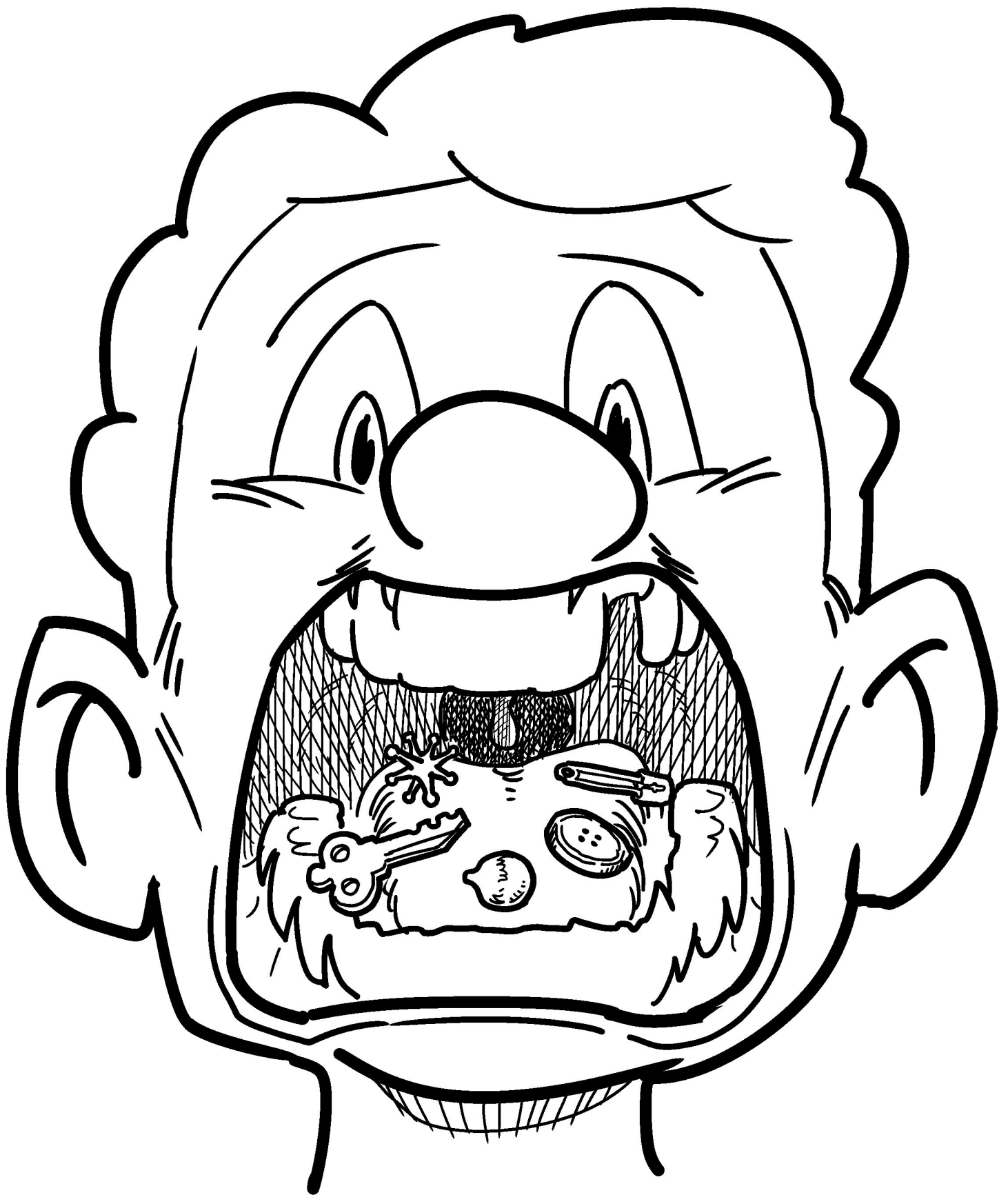
**The medicine cabinet is totally off limits.
KEEP OUT.**



Plastic bags can be dangerous. Never put one over your head or allow a small pet to crawl in one.



Most cleaning products are dangerous if swallowed and can hurt if they get in your eyes. Always ask for permission before using them.



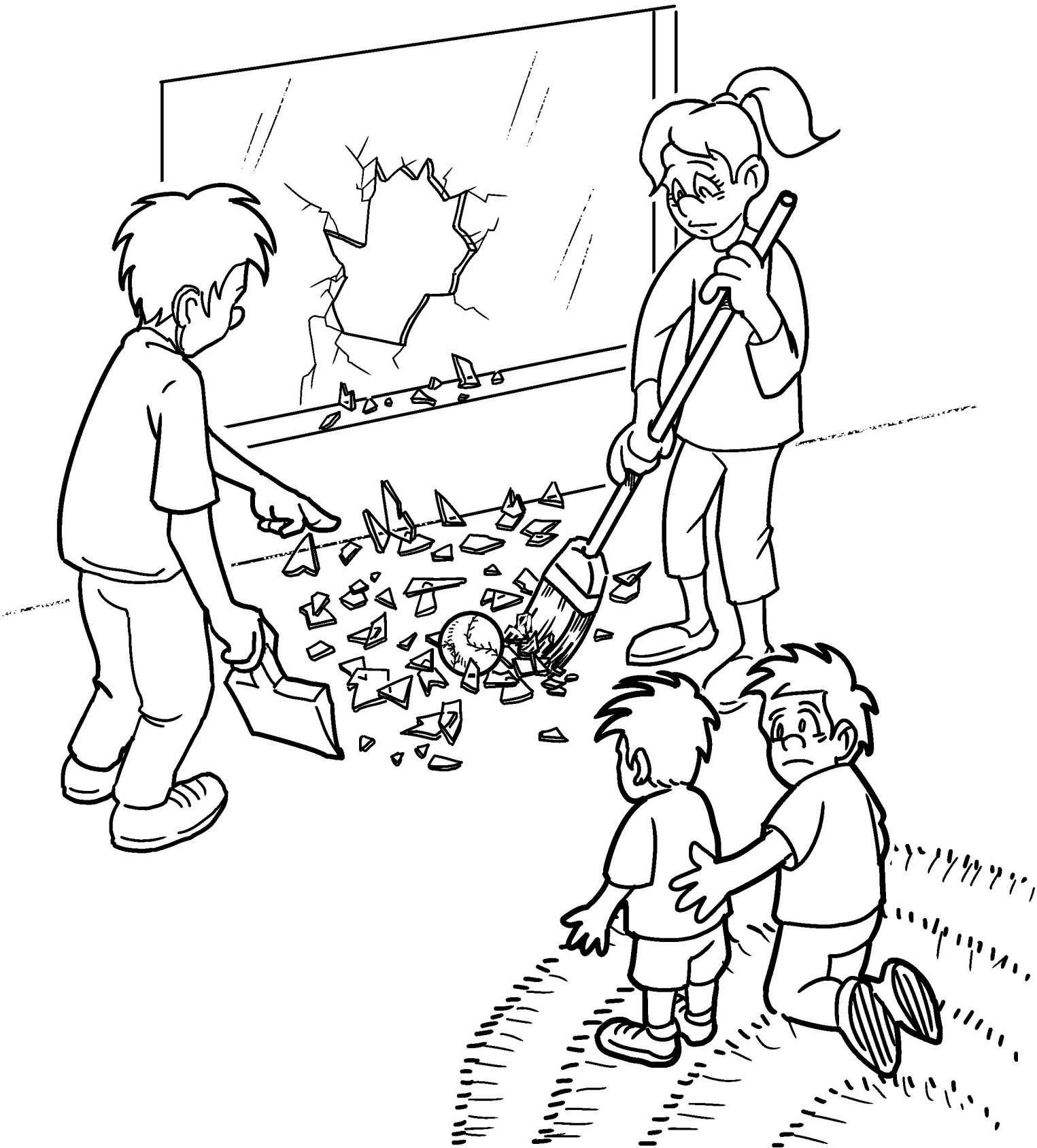
**Never put small objects in your mouth.
If swallowed, they can choke you.**



**Kitchens aren't a good place to play.
Never reach for anything on the
stove or counters.**



**Never play around stoves or ovens.
You never know when they
could be extremely hot.**



**Broken glass is never safe.
Accidents happen, but always
ask a parent to clean it up.**



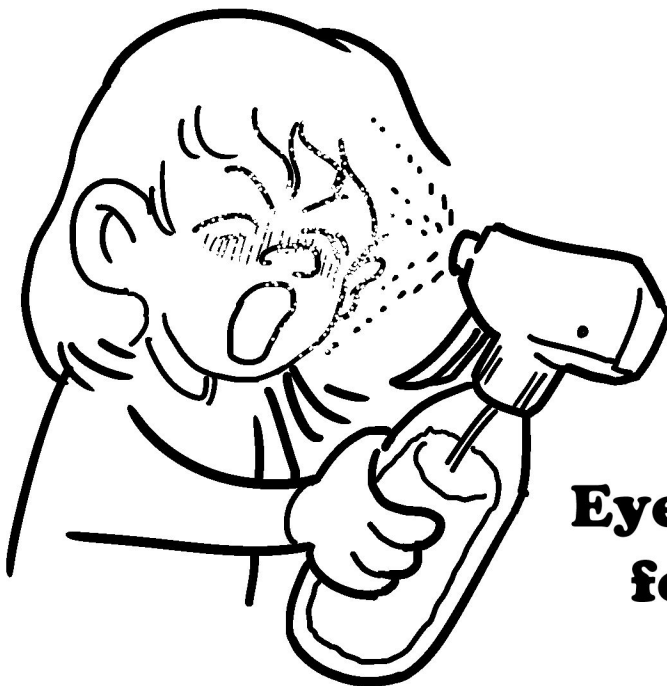
If you find matches, tell an adult immediately. Don't ever play with matches.



**Ears are made
for hearing.**



**Noses are made
for smelling.**

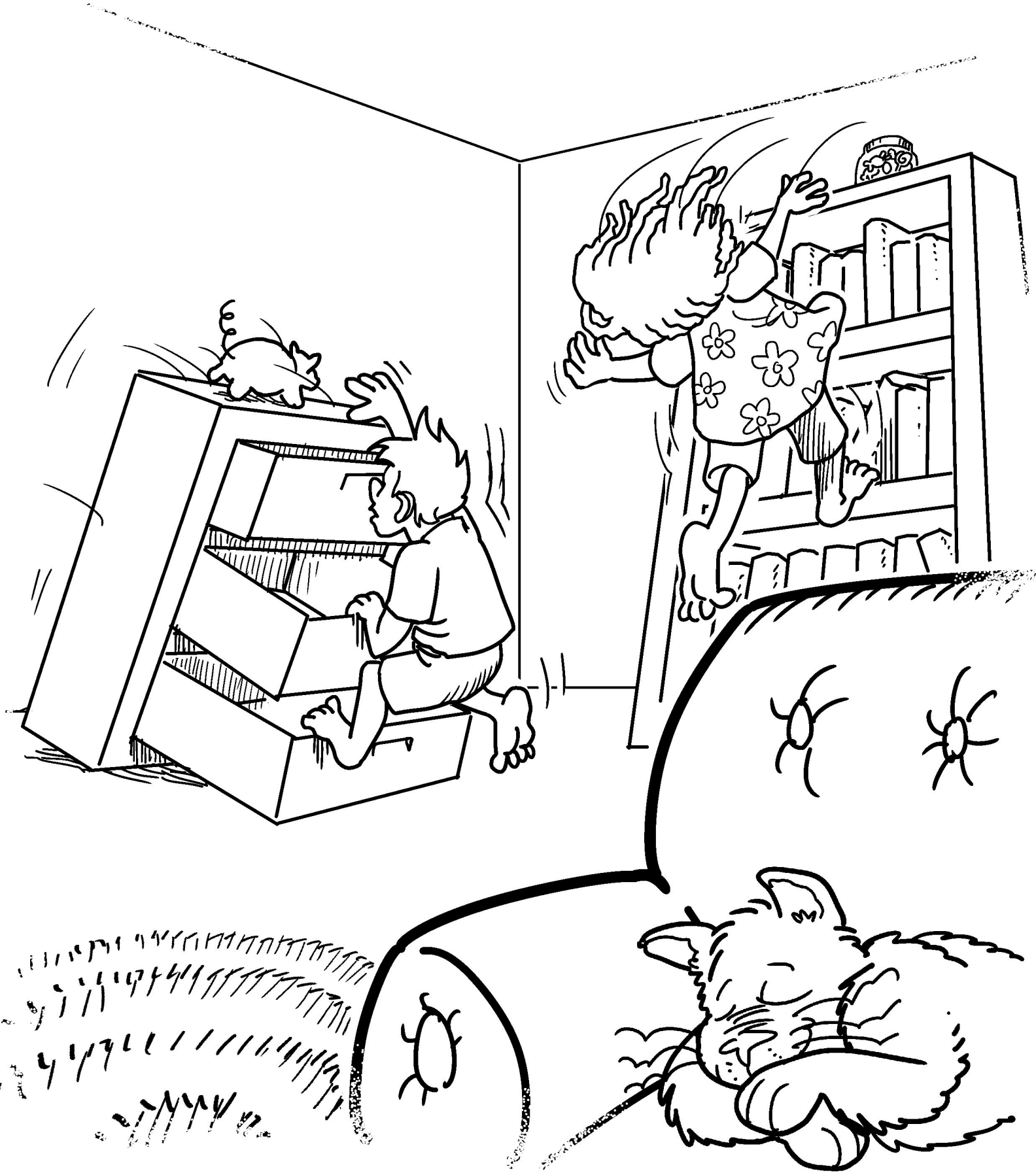


**Eyes are made
for seeing.**

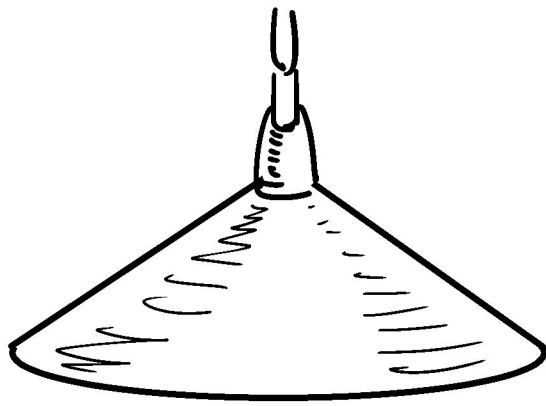
DON'T put anything in them.



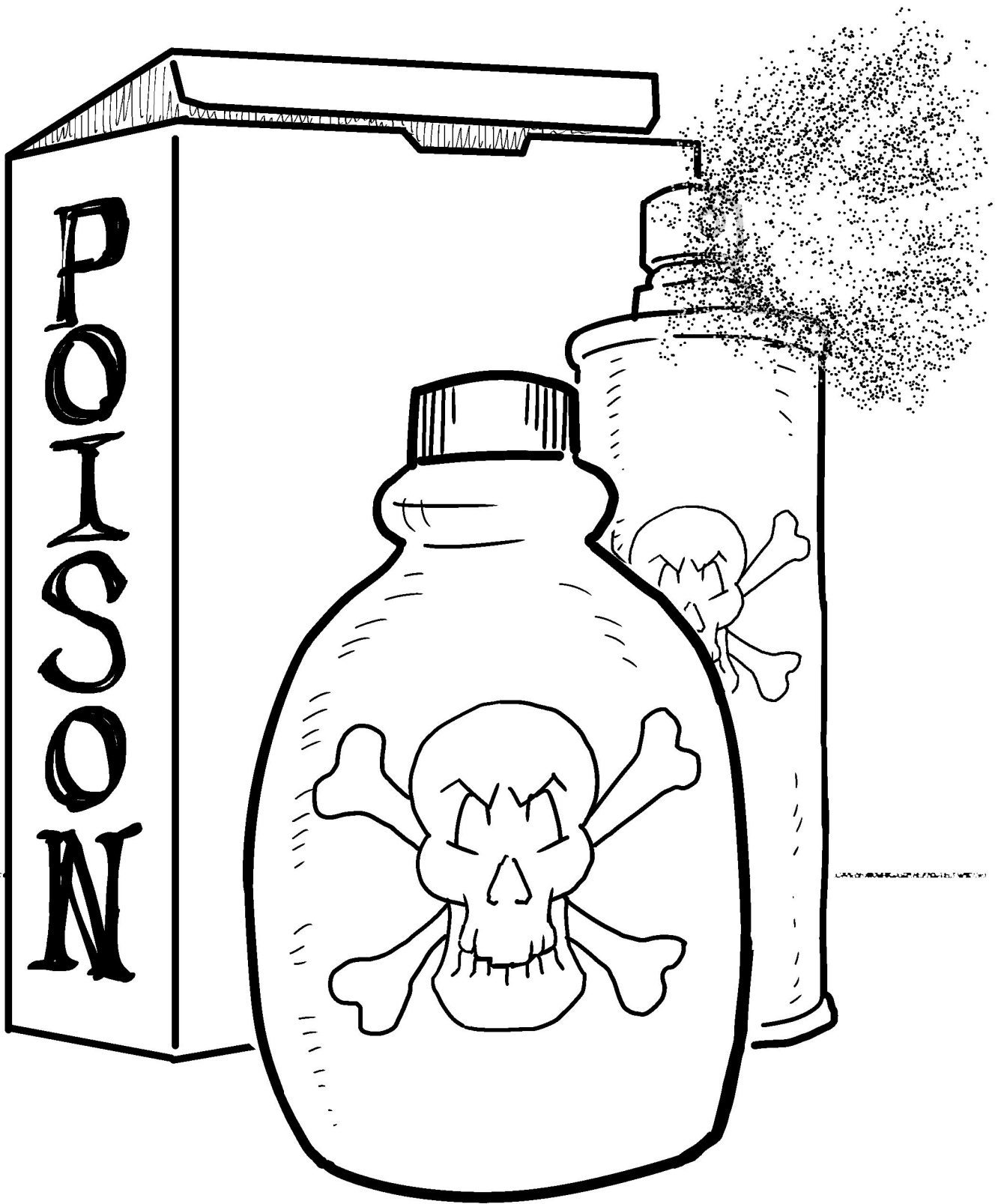
Jumping on the bed is bad for the furniture, and you could get hurt.



**Climbing on furniture can be very dangerous.
Save your climbing energy for outside play.**



**Ask for help when clearing the table.
It's easy to make mistakes when
you're learning how to help.**



**If you see these symbols,
STAY AWAY!**